

HAMPSHIRE COUNTY COUNCIL

Officer Decision Record

Decision Maker:	Adrian Gray
Title:	Traffic Order Proposals – 50 and 60mph Speed Limits at Aldershot
Reference:	

Tel: 01962 846892

Email: adrian.gray@hants.gov.uk
ian.janes@hants.gov.uk

1. The decision:

- 1.1. That a traffic order be implemented under the Road Traffic Regulation Act 1984, the effects of which will impose 50 and 60 miles per hour speed limits on the following lengths of road at Aldershot:

50mph – existing derestricted

A325 Farnborough Road between a point 60 metres north-east of its junction with Claycart Road and a point 160 metres south-west of its junction with A323 Fleet Road, an approximate distance of 700 metres.

60mph – existing derestricted

- (i) A325 Farnborough Road between a point 480 metres south-west of its junction with Queens Roundabout and a point 160 metres south-west of its junction with U340 Fleet Road, an approximate distance of 1500 metres.
- (ii) A323 Fleet Road between its junction with A325 Farnborough Road and a point 22 metres north-west thereof.
- (iii) A325 Farnborough Road north-eastbound off-slip road leading to U340 Clubhouse Road between its junction with A325 Farnborough Road and a point 16 metres north thereof.
- (iv) A325 Farnborough Road north-eastbound on-slip road leading from the U340 Clubhouse Road between its junction with A325 Farnborough Road and a point 64 metres south-west thereof.
- (v) A325 Farnborough Road south-westbound off-slip road leading to Alison's Road between its junction with A325 Farnborough Road and a point 45 metres south-west thereof.
- (vi) A325 Farnborough Road south-westbound on-slip road leading from Alison's Road between its junction with A325 Farnborough Road and a point 25 metres north-east thereof.

In addition, the order will regularise the descriptions/measurements relating to the 40mph speed limits currently on specified lengths of U340

Clubhouse Lane and the A325 Farnborough Road on/off slip roads (north-eastbound and south-westbound).

This order will also revoke and consolidate an existing order with no change of substance save for the addition of the items described above.

2. Reasons for the decision:

- 2.1. The proposed speed limits on the A325 and associated slip roads at Aldershot are being progressed in conjunction with the proposed Wellesley residential development which includes the construction of a new junction with Pennefathers Road and may in future also include a pedestrian crossing in the vicinity of this junction and a further speed limit reduction to 40mph on the A325.
- 2.2. No objections or representations were received in response to the public consultation which took place between 5th and 26th October 2018.

3. Other options considered and rejected:

- 3.1. None

4. Scheme Funding:

- 4.1. Capital or Maintenance / Revenue [delete where appropriate]

5. Conflicts of interest:

- 5.1. None

6. Dispensation granted by the Head of Paid Service:

- 6.1. None

7. Supporting information:

- 7.1. Local Members, Councillor C Choudhary and R Dibbs support the proposals
- 7.2. Police – have no objections
- 7.3. Draft order and map

Approved by:

Date:

Adrian Gray

2/11/

2018

Adrian Gray, Head of Highways (Traffic Manager)

On behalf of the Director of Economy, Transport and

**HAMPSHIRE COUNTY COUNCIL
ROAD TRAFFIC REGULATION ACT 1984**

**THE HAMPSHIRE (VARIOUS ROADS FARNBOROUGH AND ALDERSHOT)
(RESTRICTED ROAD AND 20, 30, 40, 50 AND 60 MILES PER HOUR SPEED
LIMIT) ORDER 2018**

Hampshire County Council in exercise of its powers under Sections 82, 83 and 84 of the Road Traffic Regulation Act 1984, Part IV of Schedule 9 to the Act and of all other enabling powers, and after consultation with the Chief Officer of Police in accordance with Part III of Schedule 9 to the Act, hereby makes the following order:

1. In this order, and the preamble and schedule hereto :
“the Act” means the Road Traffic Regulation Act 1984;
“mph” means miles per hour; and
“road” means any length of highway or any other length of road to which the public has access, and includes bridges over which a road passes.
“special forces” has the same meaning as defined in The Road Traffic Exemptions (Special Forces) (Variation and Amendment) Regulations 2011
2. No person shall drive any vehicle at a speed exceeding 20 mph on any of those roads specified in schedule I to this order.
3. The lengths of road specified in schedule II to this order shall be restricted roads for the purpose of Section 81 of the Act.
4. No person shall drive any vehicle at a speed exceeding 30 mph on the road specified in Schedule III to this order.
5. No person shall drive any vehicle at a speed exceeding 40 mph on any of those roads specified in Schedule IV to this order.
6. No person shall drive any vehicle at a speed exceeding 50 mph on any of those roads specified in Schedule V to this order.
7. No person shall drive any vehicle at a speed exceeding 60 mph on any of those roads specified in Schedule VI to this order.
- 7 The Hampshire (Various Roads, Farnborough and Aldershot) (Restricted Road and 20, 30, 40 and 50 Miles Per Hour Speed Limit) Order 2016 is hereby revoked except item (vi) of Schedule IV thereto.
8. No speed limit imposed by this order applies to vehicles falling within regulation 3(4) of the Road Traffic Exemptions (Special Forces) (Variation and Amendment) Regulations 2011 when used in accordance with regulation 3(5) of those Regulations.
9. This order shall come into operation on 2018 and may be cited as “The Hampshire (Various Roads, Farnborough and Aldershot) (Restricted Road and 20, 30, 40, 50 and 60 Miles Per Hour Speed Limit) Order 2018.”

GIVEN this day of 2018

THE COMMON SEAL of HAMPSHIRE)
COUNTY COUNCIL was hereunto affixed)
in the presence of:)

Authorised Signatory

SCHEDULE I

Roads at Aldershot in the Borough of Rushmoor 20mph Speed Limit

- (i) Herrett Street for its entire length, an approximate distance of 266 metres.
- (ii) Stone Street for its entire length, an approximate distance of 110 metres.
- (iii) Shalden Road for its entire length, an approximate distance of 108 metres.
- (iv) Highclere Road for its entire length, an approximate distance of 229 metres.
- (v) Woodcott Terrace for its entire length, an approximate distance of 64 metres.

Roads at Farnborough in the Borough of Rushmoor 20mph Speed Limit

- (vi) Lynchford Road (spur) between its roundabout junction with B3403 Alexandra Road / B3011 Lynchford Road and a point 125 metres east of its junction with Camp Road, an approximate distance of 280 metres.

The following roads for their entire lengths (measured in metres)

	<i>Road</i>	<i>Approximate Distance</i>
(vii)	Camp Road	230
(viii)	Closeworth Road	160
(ix)	Gordon Road	190
(x)	Gordon Road (spur)	30
(xi)	Gravel Road	200
(xii)	High Street	370
(xiii)	Morris Road	225
(xiv)	Peabody Road	590
(xv)	Queens Road	850
(xvi)	Sherborne Road	280
(xvii)	Somerset Road	375
(xviii)	Yeovil Close	75
(xix)	Yeovil Road	225
(xx)	York Road	370

SCHEDULE II

Roads at Farnborough and Aldershot in the Borough of Rushmoor Restricted Roads

- (i) A325 Farnborough Road between a point 85 metres north-east of its roundabout junction with Cranmore Lane and the county boundary with Surrey (including the circulatory carriageway of the roundabout), an approximate distance of 178 metres.
- (ii) A325 Farnborough Road between a point 75 metres north of its junction with Queens Roundabout (Lynford Road / Government House Road) and a point 180 metres south of its junction with that roundabout (including the circulatory carriageway of the roundabout)
- (iii) Government House Road between its junction with Queens Roundabout and a point 140 metres west thereof.
- (iv) B3014 Fleet Road between a point 41 metres east of its junction with Conway Drive and a point 75 metres west of its junction with Howard Drive, an approximate distance of 975 metres.
- (v) Minley Road between a point 162 metres north-west of its junction with Woodlands Road and its junction with Sandy Lane at the district boundary.
- (vi) U239 Trunk Road between its junction with B3014 Fleet Road and its junction with Minley Road.
- (vii) Sandy Lane between its junction with Minley Road and a point 20 metres south-west of its junction with The Potteries.
- (viii) C62 Fernhill Road between a point 97 metres south-east of its junction with C62 Fernhill Lane and its junction with Woodlands Walk at the district boundary with Hart, an approximate distance of 233 metres.
- (ix) C62 Fernhill Lane between its junction with Fernhill Road and its junction with A3272 Hawley Road, an approximate distance of 720 metres.
- (x) Randell Close, for its entire length.
- (ix) Fernhill Close, for its entire length.
- (xi) Orchard Close, for its entire length.
- (xii) A325 Farnborough Road between a point 25 metres north of its junction with Cambridge Road West and a point 30 metres north of its junction with Highgate Lane.

SCHEDULE III

Road at Farnborough in the Borough of Rushmoor 30 Miles per Hour

Fernhill Walk, for its entire length.

SCHEDULE IV

Roads at Farnborough and Aldershot in the Borough of Rushmoor 40 Miles per Hour

- (i) A327 Summit Avenue / Ively Road / Elles Road / Meudon Avenue between a point on Summit Avenue 3 metres north of the northern end of the bridge spanning the B3014 Fleet Road and a point on Meudon Avenue 76 metres west of its roundabout junction with the A325 Farnborough Road, an approximate distance of 4,921 metres.
- (ii) Ively Road between its roundabout junction with A327 Elles Road and a point 145 metres south-west thereof.
- (iii) A325 Farnborough Road between a point 85 metres north-east of its roundabout junction with Cranmore Lane and a point 60 metres north-east of its junction with Claycart Road.
- (iv) A325 Farnborough Road between its junction with Lynchford Road / Queens Roundabout and a point 25 metres north of its junction with Cambridge Road West.
- (v) A325 Farnborough Road between a point 30 metres north of its junction with Highgate Lane and the county boundary with Surrey at the A331 bridge, an approximate distance of 1,453 metres.
- (vi) U340 Clubhouse Road between its junction with Alison's Road at the southbound on/off-slip roads and a point 110 metres west of its junction with the north-bound on-slip road leading to the A325 Farnborough Road, an approximate distance of 280 metres.
- (vii) A325 north-eastbound off-slip road between a point 16 metres north of its junction with the A325 Farnborough Road and its junction with the U340 Clubhouse Road.
- (viii) A325 north-eastbound on-slip road between a point 64 metres south-west of its junction with the A325 Farnborough Road and its junction with U340 Clubhouse Road.
- (ix) A325 south-westbound off-slip road between a point 45 metres south-west of its junction with the A325 Farnborough Road and its junction with Alison's Road/U340 Clubhouse Road.
- (x) A325 south-westbound on-slip road between its junction with Alison's Road/U340 Clubhouse Road and a point 25 metres north-east of its junction with the A325 Farnborough Road.

- (v) Government House Road between a point 140 metres west of its junction with A325 Farnborough Road at Queens Roundabout and a point 70 metres east of its junction with Shoe Lane, an approximate distance of 254 metres.
- (vi) Wellesley Road between its roundabout junction with A325 Farnborough Road and a point 50 metres west thereof.
- (vii) A323 Wellington Avenue between its roundabout junction with A325 Farnborough Road and its roundabout junction with Oberursel Way.

SCHEDULE V

Roads at Farnborough and Aldershot in the Borough of Rushmoor 50 Miles per Hour

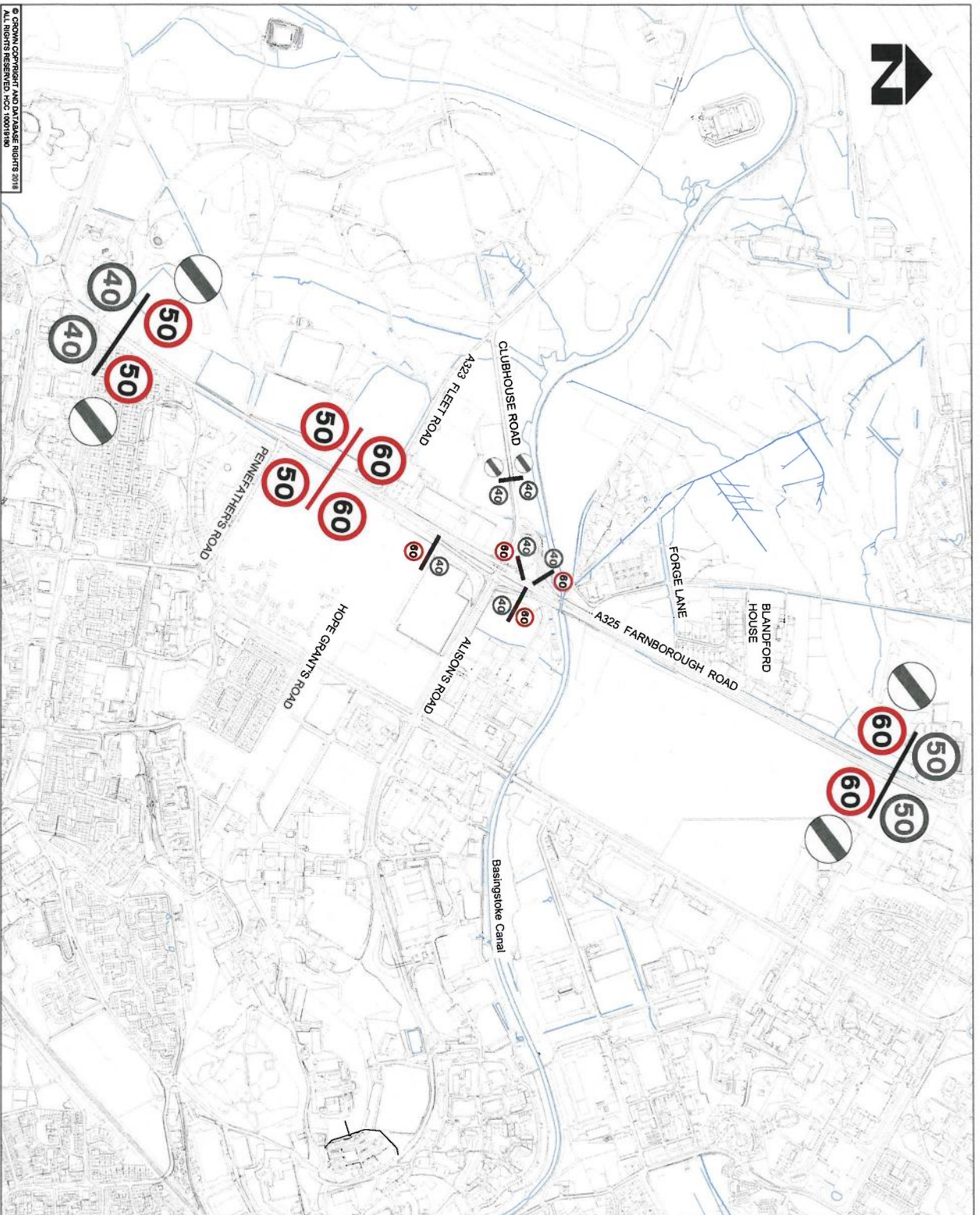
- (i) A3013 Cove Road / A327 between a point 196 metres west of its junction with Sankey Lane and its roundabout junction with the A327 Summit Avenue, an approximate distance of 1,000 metres.
- (ii) B3014 Fleet Road between its roundabout junction with the A3013 Cove Road and a point 75 metres west of its junction with Howard Drive, an approximate distance of 410 metres.
- (iii) A327 Summit Avenue between its roundabout junction with the A3013 Cove Road and a point 3 metres north of the northern end of the bridge across Fleet Road, an approximate distance of 70 metres.
- (iv) A327 Minley Link between its roundabout junction with the A3013 Cove Road and a point 120 metres north-east thereof.
- (v) A325 Farnborough Road between a point 180 metres south of its junction with Queens Roundabout and a point 300 metres south of that point.
- (vi) A325 Farnborough Road between a point 60 metres north-east of its junction with Claycart Road and a point 160 metres south-west of its junction with A323 Fleet Road, an approximate distance of 700 metres.

SCHEDULE VI

Roads at Aldershot in the Borough of Rushmoor 60 miles per hour

- (i) A325 Farnborough Road between a point 480 metres south-west of its junction with Queens Roundabout and a point 160 metres south-west of its junction with A323 Fleet Road, an approximate distance of 1500 metres.
- (ii) A323 Fleet Road between its junction with A325 Farnborough Road and a point 22 metres north-west thereof.

- (iii) A325 Farnborough Road north-eastbound off-slip road leading to U340 Clubhouse Road between its junction with A325 Farnborough Road and a point 16 metres north thereof.
- (iv) A325 Farnborough Road north-eastbound on-slip road leading from the U340 Clubhouse Road between its junction with A325 Farnborough Road and a point 64 metres south-west thereof.
- (v) A325 Farnborough Road south-westbound off-slip road leading to Alison's Road between its junction with A325 Farnborough Road and a point 45 metres south-west thereof.
- (vi) A325 Farnborough Road south-westbound on-slip road leading from Alison's Road between its junction with A325 Farnborough Road and a point 25 metres north-east thereof.



KEY



EXISTING SPEED LIMITS
SHOWN IN GREY



PROPOSED SPEED LIMITS
SHOWN IN RED/BLACK

FOR
INFORMATION
ONLY

NOTE

DO NOT SCALE FROM THIS DRAWING.

© CROWN COPYRIGHT AND DATA/IMAGE RIGHTS 2018
ALL RIGHTS RESERVED. HCC 100019190

REV	DATE	BY	CHKD	APPD	REV
1	20-08-2018	GH	GH	GH	1

Hampshire
County Council
STUART JAMES BELL, CHIEF EXECUTIVE OFFICER
TRANSPORT & ENVIRONMENT

DESIGNED	U
CHECKED	LH
APPROVED	U

WELLESLEY ALDERSHOT
FARNBOROUGH ROAD
DATE: 20-08-2018
SHEET NUMBER: 1 OF 1

PROPOSED SPEED LIMITS

DRAWING NUMBER: GTASHOT_FR/SK/21-REV A
REV: A